

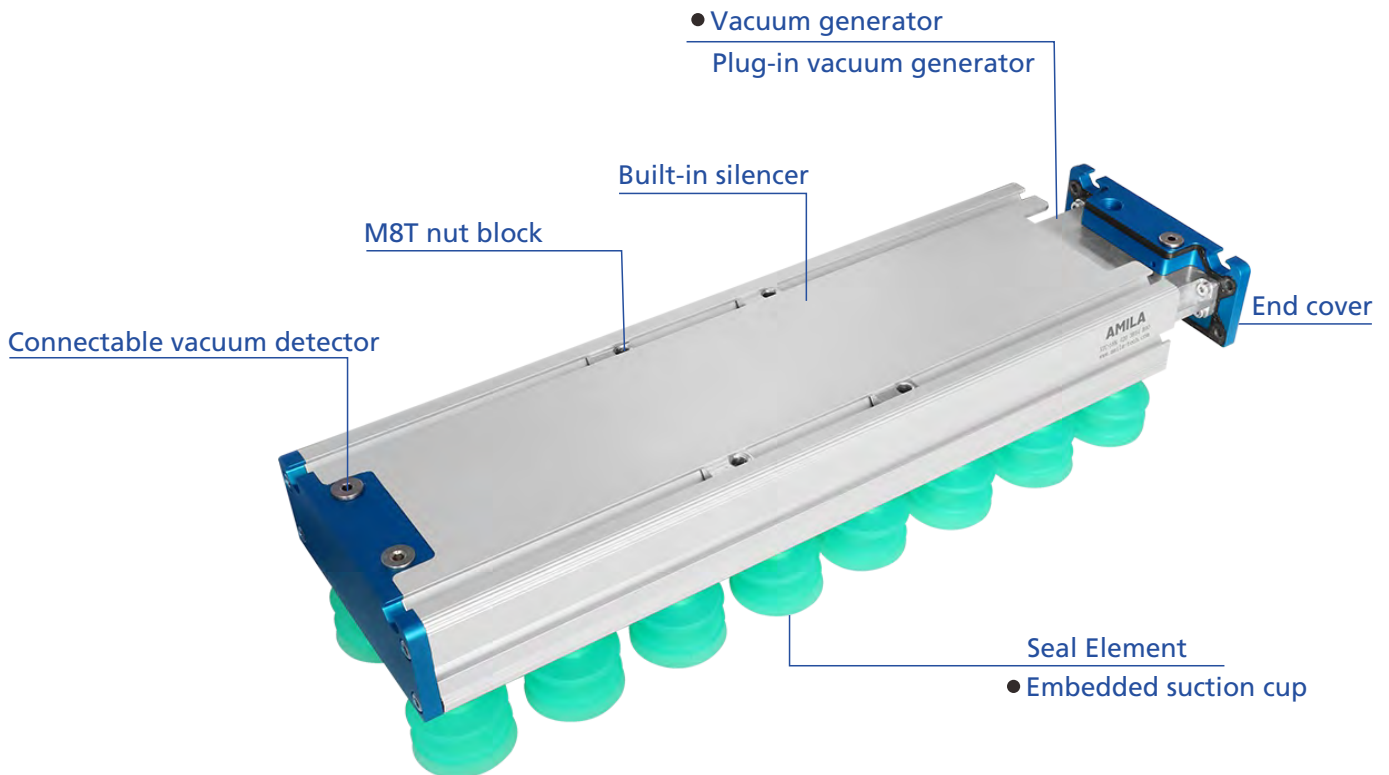
Large area vacuum gripping system ATC/ATD

Modular design, vacuum generators can be replaced independently

Grippers introduction and display

ATC: Integrated vacuum generator

The large-area vacuum suction system ATC uses a plug-in vacuum generator that can be individually configured and quickly disassembled depending on the operating conditions. The system is modular in design and easy to maintain. The interface is reserved, and functional components can be directly attached to the suction tool to optimize the process, environmental protection and energy saving.



Plug-in vacuum generator

- Performance optimization: Use high vacuum to generate higher flow rates for higher adsorbing force. Particularly suitable for handling breathable workpieces.
- The workpiece can be quickly released even at low vacuum levels, creating a higher suction force.
- The silencer controls the noise level to within 74dB(A).
- Quick connect unit, easy to clean



Combined Suction Cups

Vacuum Suction Cups

Composite Suction Cups

Special Grippers

Vacuum Gripping Systems

Mounting Elements

Vacuum Generators

Valve Technology

Switch And Monitoring

Vacuum Filters

Large area vacuum gripping system ATC/ATD

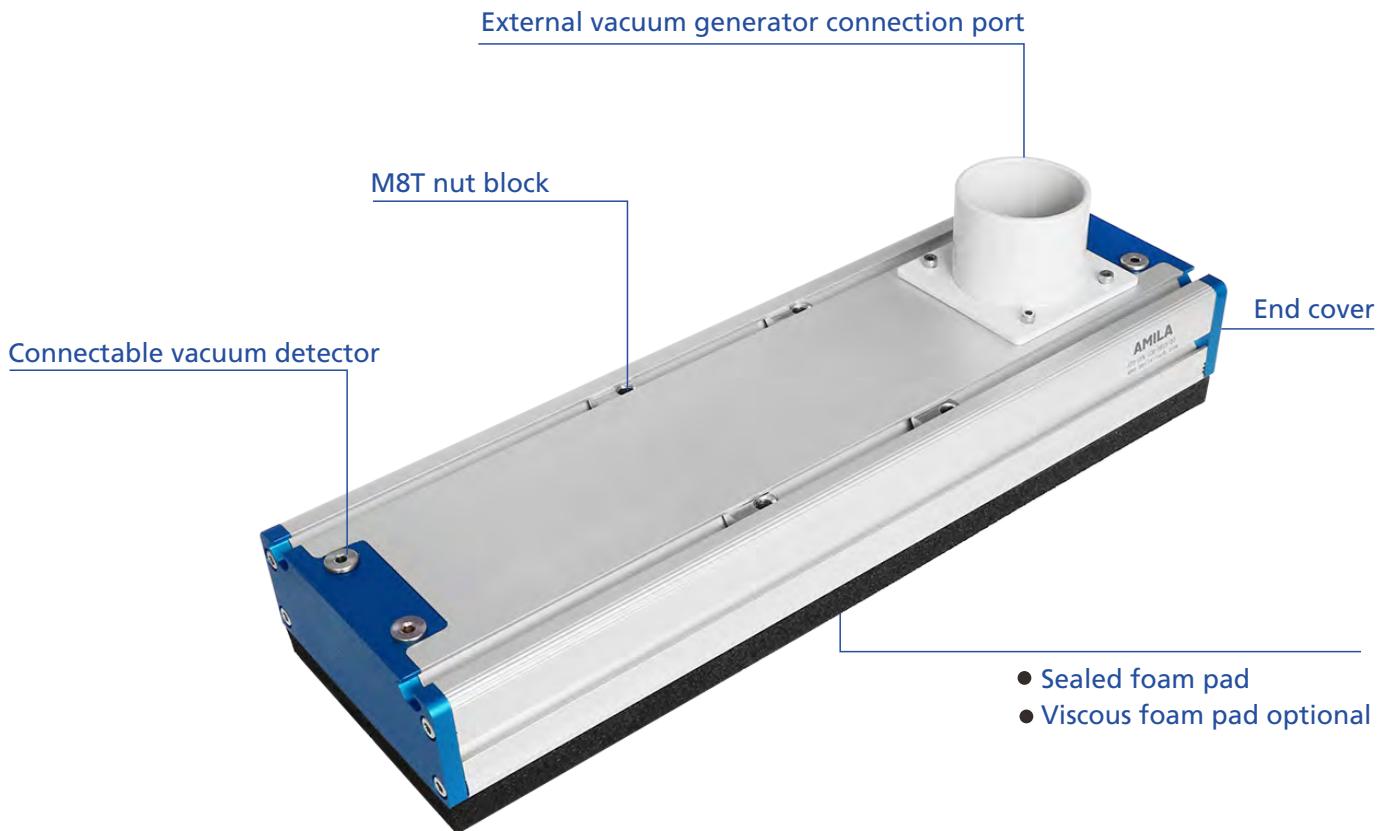


Modular design, vacuum generators can be replaced independently

Grippers introduction and display

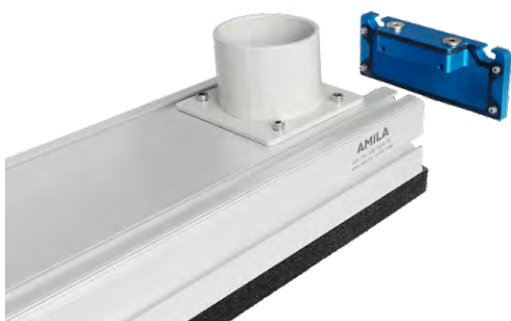
ATD: suitable for external vacuum generators.

The large-area gripping system ATD adopts the same module design as ATC, and has an external port reserved for external vacuum generators, so it is especially suitable for high-flow vacuum pumps and blowers.



External vacuum generator connection port

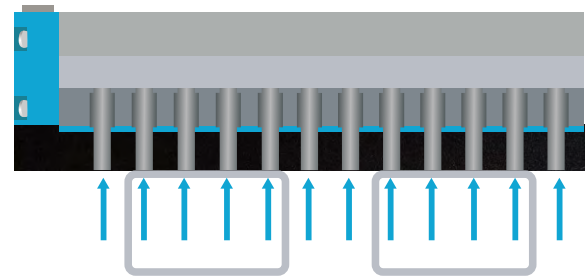
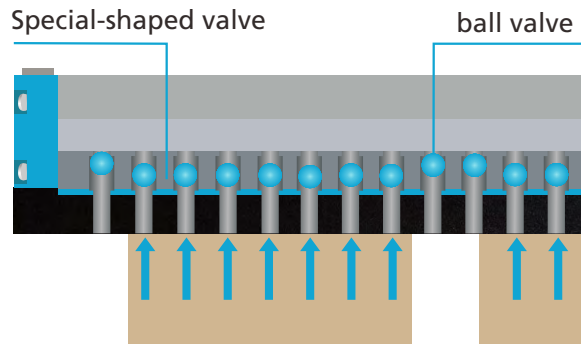
- Can be used with an electrically driven vacuum generator (blower or vacuum pump).
- High flow rate for handling breathable or curved workpieces



- Combined Suction Cups
- Vacuum Suction Cups
- Composite Suction Cups
- Special Grippers
- Vacuum Gripping Systems
- Mounting Elements
- Vacuum Generators
- Valve Technology
- Switch And Monitoring
- Vacuum Filters

New valve technology

New valve technology



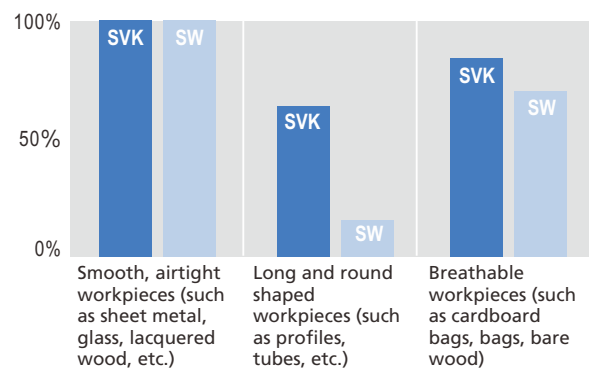
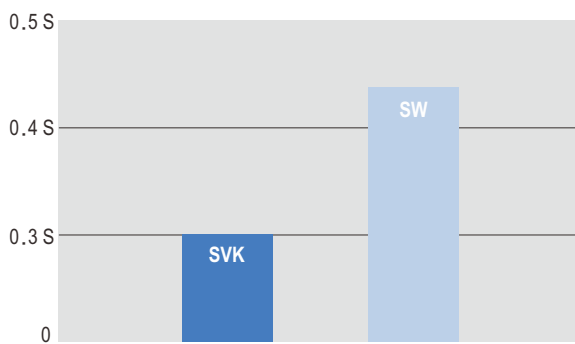
Check valve SVK

- The mechanical check valve is integrated on the aluminum profile panel. When the sponge suction hole is not covered to the workpiece, the check valve is automatically closed to ensure the system vacuum.
- With anti-leakage function, Improve handling efficiency and suction
- Special-shaped valve, which increases the diameter and allows more flow to pass. It is suitable for high-speed grabbing and release. It can meet the handling requirements of uneven workpieces on the handling surface

Throttle valve SW

- The valve diaphragm has a built-in throttle to minimize vacuum leakage without the suction area covering the workpiece.
- Suitable for flipping and high speed handling
- Throttle valve size is optional

Selection Aid



Application features	SVK	SW
Smooth surface and high air tightness (eg sheet metal, glass, lacquered wood, etc.)	✓	✓
Breathable workpieces (such as cardboard, bags, bare wood, etc.)	✓	
The surface of the workpiece is uneven	✓	
The surface area of the workpiece is small, and the suction hole coverage of the suction tool is low (such as pipe fittings, profiles, etc.)	✓	
Maximize the shrinking cycle (accelerate blow release)	✓	
Optimize energy efficiency	✓	
Flip operation angle >45°		✓

- Combined Suction Cups
- Vacuum Suction Cups
- Composite Suction Cups
- Special Grippers
- Vacuum Gripping Systems
- Mounting Elements
- Vacuum Generators
- Valve Technology
- Switch And Monitoring
- Vacuum Filters

Selection Aid

Selection instructions

You need to prepare a number of original workpieces for testing in our test center so that we can design the best application for you.

Number description

Example: ATC SVK 258 5R 36 B20

Type	Valve technology	length [mm]	Number of suction holes	Suction hole spacing [mm]	Seal Element [mm]
ATC (Built-in vacuum generator)	SVK check valve	258	5R 5 rows	36	B20
ATC (Built-in vacuum generator)	SVK check valve	258	3R 3 rows (Standard)	18	Sealed foam pad (height = 20)
		278			No trace
ATD (external vacuum generating)	SW throttle valve	294	5R 5 rows (Standard)	18	Sealed foam pad (height = 21)
		420			No trace
		508			No trace
		618	5R 5 rows	36	Suction cup (diameter 20)
		816			Suction cup (diameter 40)
		978			combined suction cup (diameter 39)
1212	3R 3 rows	54	combined suction cup (diameter 55)		
1410			combined suction cup (diameter 55)		

Selection Aid

Application	SVK	SW
Minimize interference caused by mismatch between tube diameter and external vacuum generator (highly integrated)	✓	
Easy to install, fast connection	✓	
Minimize system cost (input costs include vacuum generation unit, hose and controller)	✓	
Minimize operating costs (because of the choice of electric vacuum generators), especially if multiple suction cups are required	✓	
Handling highly breathable workpieces	✓	

Application	Foam	Suction cup
Rigid workpieces such as sheets, sheet metal, profiles and pallets	✓	✓
Flexible workpieces such as cardboard boxes, bags, bags and trays	✓	✓
Long and narrow workpieces and plates	✓	
The surface of the workpiece is rough and has a textured pattern	✓	
Handling small workpieces such as cans (open/closed)	✓	

Large area vacuum gripping system ATC/ATD



Foam Grippers ATC-3R18



Ordering Data Foam Grippers ATC-3R18

Type	Product Code Foam Grippers (thickness 20mm foam)			
	No filter	With filter (F)	No filter without trace (H)	With filter without trace (FH)
ATC-SVK 258 3R18	90.11.01.00001	90.11.01.00021	90.11.01.00041	90.11.01.00061
ATC-SVK 278 3R18	90.11.01.00002	90.11.01.00022	90.11.01.00042	90.11.01.00062
ATC-SVK 294 3R18	90.11.01.00003	90.11.01.00023	90.11.01.00043	90.11.01.00063
ATC-SVK 420 3R18	90.11.01.00004	90.11.01.00024	90.11.01.00044	90.11.01.00064
ATC-SVK 508 3R18	90.11.01.00005	90.11.01.00025	90.11.01.00045	90.11.01.00065
ATC-SVK 618 3R18	90.11.01.00006	90.11.01.00026	90.11.01.00046	90.11.01.00066
ATC-SVK 816 3R18	90.11.01.00007	90.11.01.00027	90.11.01.00047	90.11.01.00067
ATC-SVK 978 3R18	90.11.01.00008	90.11.01.00028	90.11.01.00048	90.11.01.00068
ATC-SVK 1212 3R18	90.11.01.00009	90.11.01.00029	90.11.01.00049	90.11.01.00069
ATC-SVK 1410 3R18	90.11.01.00010	90.11.01.00030	90.11.01.00050	90.11.01.00070
ATC-SW 258 3R18	90.11.01.00011	90.11.01.00031	90.11.01.00051	90.11.01.00071
ATC-SW 278 3R18	90.11.01.00012	90.11.01.00032	90.11.01.00052	90.11.01.00072
ATC-SW 294 3R18	90.11.01.00013	90.11.01.00033	90.11.01.00053	90.11.01.00073
ATC-SW 420 3R18	90.11.01.00014	90.11.01.00034	90.11.01.00054	90.11.01.00074
ATC-SW 508 3R18	90.11.01.00015	90.11.01.00035	90.11.01.00055	90.11.01.00075
ATC-SW 618 3R18	90.11.01.00016	90.11.01.00036	90.11.01.00056	90.11.01.00076
ATC-SW 816 3R18	90.11.01.00017	90.11.01.00037	90.11.01.00057	90.11.01.00077
ATC-SW 978 3R18	90.11.01.00018	90.11.01.00038	90.11.01.00058	90.11.01.00078
ATC-SW 1212 3R18	90.11.01.00019	90.11.01.00039	90.11.01.00059	90.11.01.00079
ATC-SW 1410 3R18	90.11.01.00020	90.11.01.00040	90.11.01.00060	90.11.01.00080

Ordering Data Foam Seal Accessories ATC-3R18

Type	Product Code Foam Grippers (thickness 20mm foam)			
	No filter	With filter (F)	No filter without trace (H)	With filter without trace (FH)
M-PL 258 3R18	90.11.02.00001	90.11.02.00011	90.11.02.00021	90.11.02.00031
M-PL 278 3R18	90.11.02.00002	90.11.02.00012	90.11.02.00022	90.11.02.00032
M-PL 294 3R18	90.11.02.00003	90.11.02.00013	90.11.02.00023	90.11.02.00033
M-PL 420 3R18	90.11.02.00004	90.11.02.00014	90.11.02.00024	90.11.02.00034
M-PL 508 3R18	90.11.02.00005	90.11.02.00015	90.11.02.00025	90.11.02.00035
M-PL 618 3R18	90.11.02.00006	90.11.02.00016	90.11.02.00026	90.11.02.00036
M-PL 816 3R18	90.11.02.00007	90.11.02.00017	90.11.02.00027	90.11.02.00037
M-PL 978 3R18	90.11.02.00008	90.11.02.00018	90.11.02.00028	90.11.02.00038
M-PL 1212 3R18	90.11.02.00009	90.11.02.00019	90.11.02.00029	90.11.02.00039
M-PL 1410 3R18	90.11.02.00010	90.11.02.00020	90.11.02.00030	90.11.02.00040

- Combined Suction Cups
- Vacuum Suction Cups
- Composite Suction Cups
- Special Grippers
- Vacuum Gripping Systems
- Mounting Elements
- Vacuum Generators
- Valve Technology
- Switch And Monitoring
- Vacuum Filters

Large area vacuum gripping system ATC/ATD



Foam Grippers ATC-3R18

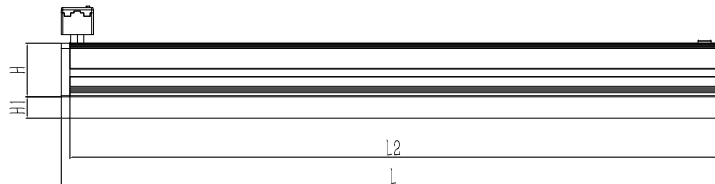
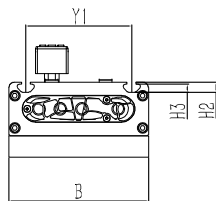


Technical Data ATC-3R18

Type	Number of suction holes	Air consumption [l/min]	Maximum suction capacity [l/min]	Maximum vacuum [%]	Suction force [N]	Weight [kg]
ATC-SVK 258 3R18	39	180	1050	60	325	2.2
ATC-SVK 278 3R18	42	180	1050	60	350	2.4
ATC-SVK 294 3R18	45	180	1050	60	375	2.6
ATC-SVK 420 3R18	66	180	1050	60	550	3.1
ATC-SVK 508 3R18	81	270	1190	60	680	3.5
ATC-SVK 618 3R18	99	270	1350	60	820	3.9
ATC-SVK 816 3R18	132	360	1600	60	1090	5.5
ATC-SVK 978 3R18	159	450	2700	60	1350	6.1
ATC-SVK 1212 3R18	198	540	2940	60	1650	7.1
ATC-SVK 1410 3R18	231	630	3180	60	1910	7.9
ATC-SW 258 3R18	39	180	820	60	225	2.1
ATC-SW 278 3R18	42	180	860	60	250	2.3
ATC-SW 294 3R18	45	180	900	60	300	2.5
ATC-SW 420 3R18	66	180	1050	60	440	3.0
ATC-SW 508 3R18	81	270	1190	60	540	3.4
ATC-SW 618 3R18	99	270	1350	60	660	3.8
ATC-SW 816 3R18	132	360	1600	60	870	5.4
ATC-SW 978 3R18	159	450	2700	60	1020	6.0
ATC-SW 1212 3R18	198	540	2940	60	1310	7.0
ATC-SW 1410 3R18	231	630	3180	60	1530	7.8

Design Data ATC-3R18

ATC/3R18



Type	Dimensions[mm]								Y1
	B	H	H1	H2	H3	L	L2		
ATC-SVK 258 3R18	130	50	20	9.7	7.7	258	242	98	
ATC-SVK 278 3R18	130	50	20	9.7	7.7	278	262	98	
ATC-SVK 294 3R18	130	50	20	9.7	7.7	294	278	98	
ATC-SVK 420 3R18	130	50	20	9.7	7.7	420	404	98	
ATC-SVK 508 3R18	130	50	20	9.7	7.7	508	492	98	
ATC-SVK 618 3R18	130	50	20	9.7	7.7	618	602	98	
ATC-SVK 816 3R18	130	50	20	9.7	7.7	816	800	98	
ATC-SVK 978 3R18	130	50	20	9.7	7.7	978	962	98	
ATC-SVK 1212 3R18	130	50	20	9.7	7.7	1212	1196	98	
ATC-SVK 1410 3R18	130	50	20	9.7	7.7	1410	1394	98	
ATC-SW 258 3R18	130	50	20	9.7	7.7	258	242	98	
ATC-SW 278 3R18	130	50	20	9.7	7.7	278	262	98	
ATC-SW 294 3R18	130	50	20	9.7	7.7	294	278	98	
ATC-SW 420 3R18	130	50	20	9.7	7.7	420	404	98	
ATC-SW 508 3R18	130	50	20	9.7	7.7	508	492	98	
ATC-SW 618 3R18	130	50	20	9.7	7.7	618	602	98	
ATC-SW 816 3R18	130	50	20	9.7	7.7	816	800	98	
ATC-SW 978 3R18	130	50	20	9.7	7.7	978	962	98	
ATC-SW 1212 3R18	130	50	20	9.7	7.7	1212	1196	98	
ATC-SW 1410 3R18	130	50	20	9.7	7.7	1410	1394	98	

Large area vacuum gripping system ATC/ATD



Foam Grippers ATD-3R18



Ordering Data Foam Grippers ATD-3R18

Type	Product Code Foam Grippers (thickness 20mm foam)			
	No filter	With filter (F)	No filter without trace (H)	With filter without trace (FH)
ATD-SVK 258 3R18	90.11.01.00081	90.11.01.00101	90.11.01.00121	90.11.01.00141
ATD-SVK 278 3R18	90.11.01.00082	90.11.01.00102	90.11.01.00122	90.11.01.00142
ATD-SVK 294 3R18	90.11.01.00083	90.11.01.00103	90.11.01.00123	90.11.01.00143
ATD-SVK 420 3R18	90.11.01.00084	90.11.01.00104	90.11.01.00124	90.11.01.00144
ATD-SVK 508 3R18	90.11.01.00085	90.11.01.00105	90.11.01.00125	90.11.01.00145
ATD-SVK 618 3R18	90.11.01.00086	90.11.01.00106	90.11.01.00126	90.11.01.00146
ATD-SVK 816 3R18	90.11.01.00087	90.11.01.00107	90.11.01.00127	90.11.01.00147
ATD-SVK 978 3R18	90.11.01.00088	90.11.01.00108	90.11.01.00128	90.11.01.00148
ATD-SVK 1212 3R18	90.11.01.00089	90.11.01.00109	90.11.01.00129	90.11.01.00149
ATD-SVK 1410 3R18	90.11.01.00090	90.11.01.00110	90.11.01.00130	90.11.01.00150
ATD-SW 258 3R18	90.11.01.00091	90.11.01.00111	90.11.01.00131	90.11.01.00151
ATD-SW 278 3R18	90.11.01.00092	90.11.01.00112	90.11.01.00132	90.11.01.00152
ATD-SW 294 3R18	90.11.01.00093	90.11.01.00113	90.11.01.00133	90.11.01.00153
ATD-SW 420 3R18	90.11.01.00094	90.11.01.00114	90.11.01.00134	90.11.01.00154
ATD-SW 508 3R18	90.11.01.00095	90.11.01.00115	90.11.01.00135	90.11.01.00155
ATD-SW 618 3R18	90.11.01.00096	90.11.01.00116	90.11.01.00136	90.11.01.00156
ATD-SW 816 3R18	90.11.01.00097	90.11.01.00117	90.11.01.00137	90.11.01.00157
ATD-SW 978 3R18	90.11.01.00098	90.11.01.00118	90.11.01.00138	90.11.01.00158
ATD-SW 1212 3R18	90.11.01.00099	90.11.01.00119	90.11.01.00139	90.11.01.00159
ATD-SW 1410 3R18	90.11.01.00100	90.11.01.00120	90.11.01.00140	90.11.01.00160

Ordering Data Foam Seal Accessories ATD-3R18

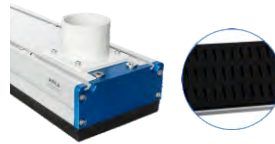
Type	Product Code Foam Grippers (thickness 20mm foam)			
	No filter	With filter (F)	No filter without trace (H)	With filter without trace (FH)
M-PL 258 3R18	90.11.02.00001	90.11.02.00011	90.11.02.00021	90.11.02.00031
M-PL 278 3R18	90.11.02.00002	90.11.02.00012	90.11.02.00022	90.11.02.00032
M-PL 294 3R18	90.11.02.00003	90.11.02.00013	90.11.02.00023	90.11.02.00033
M-PL 420 3R18	90.11.02.00004	90.11.02.00014	90.11.02.00024	90.11.02.00034
M-PL 508 3R18	90.11.02.00005	90.11.02.00015	90.11.02.00025	90.11.02.00035
M-PL 618 3R18	90.11.02.00006	90.11.02.00016	90.11.02.00026	90.11.02.00036
M-PL 816 3R18	90.11.02.00007	90.11.02.00017	90.11.02.00027	90.11.02.00037
M-PL 978 3R18	90.11.02.00008	90.11.02.00018	90.11.02.00028	90.11.02.00038
M-PL 1212 3R18	90.11.02.00009	90.11.02.00019	90.11.02.00029	90.11.02.00039
M-PL 1410 3R18	90.11.02.00010	90.11.02.00020	90.11.02.00030	90.11.02.00040

- Combined Suction Cups
- Vacuum Suction Cups
- Composite Suction Cups
- Special Grippers
- Vacuum Gripping Systems
- Mounting Elements
- Vacuum Generators
- Valve Technology
- Switch And Monitoring
- Vacuum Filters

Large area vacuum gripping system ATC/ATD



Foam Grippers ATD-3R18

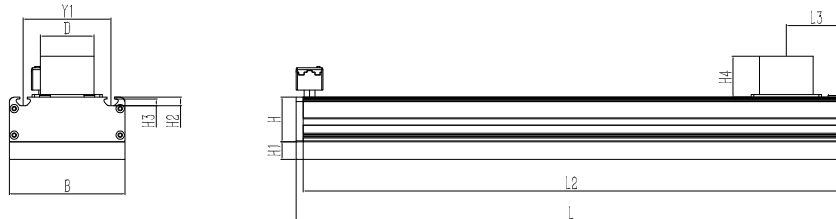


Technical Data ATD-3R18

Type	Number of suction holes	Required suction volume	Suction force	Weight
		[l/min]	[N]	[kg]
ATD-SVK 258 3R18	39	120	325	1.6
ATD-SVK 278 3R18	42	135	350	1.8
ATD-SVK 294 3R18	45	150	375	2.0
ATD-SVK 420 3R18	66	300	550	2.5
ATD-SVK 508 3R18	81	370	680	3.0
ATD-SVK 618 3R18	99	450	820	3.4
ATD-SVK 816 3R18	132	600	1090	4.6
ATD-SVK 978 3R18	159	750	1350	5.1
ATD-SVK 1212 3R18	198	900	1650	6.2
ATD-SVK 1410 3R18	231	1050	1910	7.0
ATD-SW 258 3R18	39	120	325	1.5
ATD-SW 278 3R18	42	135	350	1.7
ATD-SW 294 3R18	45	150	300	1.9
ATD-SW 420 3R18	66	300	440	2.4
ATD-SW 508 3R18	81	370	540	2.9
ATD-SW 618 3R18	99	450	660	3.3
ATD-SW 816 3R18	132	600	870	4.5
ATD-SW 978 3R18	159	750	1020	5.0
ATD-SW 1212 3R18	198	900	1310	6.1
ATD-SW 1410 3R18	231	1050	1530	6.9

Design Data ATD-3R18

ATD/3R18



Type	Dimensions[mm]										
	B	D	H	H1	H2	H3	H4	L	L2	L3	Y1
ATD-SVK 258 3R18	130	60	50	20	9.7	7.7	46	258	242	68	98
ATD-SVK 278 3R18	130	60	50	20	9.7	7.7	46	278	262	68	98
ATD-SVK 294 3R18	130	60	50	20	9.7	7.7	46	294	278	68	98
ATD-SVK 420 3R18	130	60	50	20	9.7	7.7	46	420	404	68	98
ATD-SVK 508 3R18	130	60	50	20	9.7	7.7	46	508	492	68	98
ATD-SVK 618 3R18	130	60	50	20	9.7	7.7	46	618	602	68	98
ATD-SVK 816 3R18	130	60	50	20	9.7	7.7	46	816	800	68	98
ATD-SVK 978 3R18	130	60	50	20	9.7	7.7	46	978	962	68	98
ATD-SVK 1212 3R18	130	60	50	20	9.7	7.7	46	1212	1196	68	98
ATD-SVK 1410 3R18	130	60	50	20	9.7	7.7	46	1410	1394	68	98
ATD-SW 258 3R18	130	60	50	20	9.7	7.7	46	258	242	68	98
ATD-SW 278 3R18	130	60	50	20	9.7	7.7	46	278	262	68	98
ATD-SW 294 3R18	130	60	50	20	9.7	7.7	46	294	278	68	98
ATD-SW 420 3R18	130	60	50	20	9.7	7.7	46	420	404	68	98
ATD-SW 508 3R18	130	60	50	20	9.7	7.7	46	508	492	68	98
ATD-SW 618 3R18	130	60	50	20	9.7	7.7	46	618	602	68	98
ATD-SW 816 3R18	130	60	50	20	9.7	7.7	46	816	800	68	98
ATD-SW 978 3R18	130	60	50	20	9.7	7.7	46	978	962	68	98
ATD-SW 1212 3R18	130	60	50	20	9.7	7.7	46	1212	1196	68	98
ATD-SW 1410 3R18	130	60	50	20	9.7	7.7	46	1410	1394	68	98

Large area vacuum gripping system ATC/ATD



Foam Grippers ATC-5R18



Ordering Data Foam Grippers ATC-5R18

Type	Product Code Foam Grippers (thickness 20mm foam)			
	No filter	With filter (F)	No filter without trace (H)	With filter without trace (FH)
ATC-SVK 258 5R18	90.11.01.00161	90.11.01.00181	90.11.01.00201	90.11.01.00221
ATC-SVK 278 5R18	90.11.01.00162	90.11.01.00182	90.11.01.00202	90.11.01.00222
ATC-SVK 294 5R18	90.11.01.00163	90.11.01.00183	90.11.01.00203	90.11.01.00223
ATC-SVK 420 5R18	90.11.01.00164	90.11.01.00184	90.11.01.00204	90.11.01.00224
ATC-SVK 508 5R18	90.11.01.00165	90.11.01.00185	90.11.01.00205	90.11.01.00225
ATC-SVK 618 5R18	90.11.01.00166	90.11.01.00186	90.11.01.00206	90.11.01.00226
ATC-SVK 816 5R18	90.11.01.00167	90.11.01.00187	90.11.01.00207	90.11.01.00227
ATC-SVK 978 5R18	90.11.01.00168	90.11.01.00188	90.11.01.00208	90.11.01.00228
ATC-SVK 1212 5R18	90.11.01.00169	90.11.01.00189	90.11.01.00209	90.11.01.00229
ATC-SVK 1410 5R18	90.11.01.00170	90.11.01.00190	90.11.01.00210	90.11.01.00230
ATC-SW 258 5R18	90.11.01.00171	90.11.01.00191	90.11.01.00211	90.11.01.00231
ATC-SW 278 5R18	90.11.01.00172	90.11.01.00192	90.11.01.00212	90.11.01.00232
ATC-SW 294 5R18	90.11.01.00173	90.11.01.00193	90.11.01.00213	90.11.01.00233
ATC-SW 420 5R18	90.11.01.00174	90.11.01.00194	90.11.01.00214	90.11.01.00234
ATC-SW 508 5R18	90.11.01.00175	90.11.01.00195	90.11.01.00215	90.11.01.00235
ATC-SW 618 5R18	90.11.01.00176	90.11.01.00196	90.11.01.00216	90.11.01.00236
ATC-SW 816 5R18	90.11.01.00177	90.11.01.00197	90.11.01.00217	90.11.01.00237
ATC-SW 978 5R18	90.11.01.00178	90.11.01.00198	90.11.01.00218	90.11.01.00238
ATC-SW 1212 5R18	90.11.01.00179	90.11.01.00199	90.11.01.00219	90.11.01.00239
ATC-SW 1410 5R18	90.11.01.00180	90.11.01.00200	90.11.01.00220	90.11.01.00240

Ordering Data Foam Seal Accessories ATC-5R18

Type	Product Code Foam Grippers (thickness 20mm foam)			
	No filter	With filter (F)	No filter without trace (H)	With filter without trace (FH)
M-PL 258 5R18	90.11.02.00041	90.11.02.00051	90.11.02.00061	90.11.02.00071
M-PL 278 5R18	90.11.02.00042	90.11.02.00052	90.11.02.00062	90.11.02.00072
M-PL 294 5R18	90.11.02.00043	90.11.02.00053	90.11.02.00063	90.11.02.00073
M-PL 420 5R18	90.11.02.00044	90.11.02.00054	90.11.02.00064	90.11.02.00074
M-PL 508 5R18	90.11.02.00045	90.11.02.00055	90.11.02.00065	90.11.02.00075
M-PL 618 5R18	90.11.02.00046	90.11.02.00056	90.11.02.00066	90.11.02.00076
M-PL 816 5R18	90.11.02.00047	90.11.02.00057	90.11.02.00067	90.11.02.00077
M-PL 978 5R18	90.11.02.00048	90.11.02.00058	90.11.02.00068	90.11.02.00078
M-PL 1212 5R18	90.11.02.00049	90.11.02.00059	90.11.02.00069	90.11.02.00079
M-PL 1410 5R18	90.11.02.00050	90.11.02.00060	90.11.02.00070	90.11.02.00080

Combined Suction Cups

Vacuum Suction Cups

Composite Suction Cups

Special Grippers

Vacuum Gripping Systems

Mounting Elements

Vacuum Generators

Valve Technology

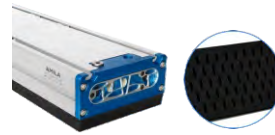
Switch And Monitoring

Vacuum Filters

Large area vacuum gripping system ATC/ATD



Foam Grippers ATC-5R18

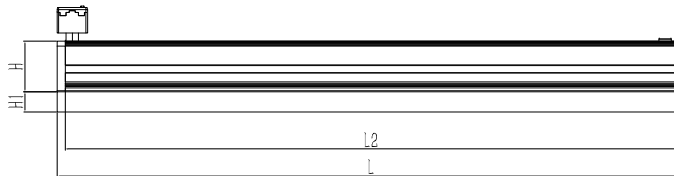
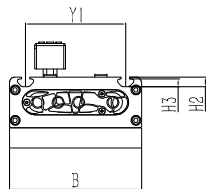


Technical Data ATC-5R18

Type	Number of suction holes	Air consumption [l/min]	Maximum suction capacity [l/min]	Maximum vacuum [%]	Suction force [N]	Weight [kg]
ATC-SVK 258 5R18	65	180	1050	60	250	2.2
ATC-SVK 278 5R18	70	180	1050	60	270	2.4
ATC-SVK 294 5R18	75	180	1050	60	290	2.6
ATC-SVK 420 5R18	110	180	1050	60	430	3.1
ATC-SVK 508 5R18	135	270	1190	60	515	3.5
ATC-SVK 618 5R18	165	270	1350	60	630	3.9
ATC-SVK 816 5R18	220	360	1600	60	840	5.5
ATC-SVK 978 5R18	265	450	2700	60	1020	6.0
ATC-SVK 1212 5R18	330	540	2940	60	1270	7.1
ATC-SVK 1410 5R18	385	630	3180	60	1470	7.9
ATC-SW 258 5R18	65	180	820	60	190	2.1
ATC-SW 278 5R18	70	180	860	60	210	2.3
ATC-SW 294 5R18	75	180	900	60	230	2.5
ATC-SW 420 5R18	110	180	1050	60	340	3.0
ATC-SW 508 5R18	135	270	1190	60	415	3.4
ATC-SW 618 5R18	165	270	1350	60	510	3.8
ATC-SW 816 5R18	220	360	1600	60	670	5.4
ATC-SW 978 5R18	265	450	2700	60	810	5.9
ATC-SW 1212 5R18	330	540	2940	60	1010	7.0
ATC-SW 1410 5R18	385	630	3180	60	1180	7.8

Design Data ATC-5R18

ATC/5R18

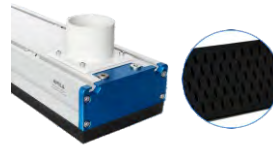


Type	Dimensions[mm]								Y1
	B	H	H1	H2	H3	L	L2		
ATC-SVK 258 5R18	130	50	20	9.7	7.7	258	242	98	
ATC-SVK 278 5R18	130	50	20	9.7	7.7	278	262	98	
ATC-SVK 294 5R18	130	50	20	9.7	7.7	294	278	98	
ATC-SVK 420 5R18	130	50	20	9.7	7.7	420	404	98	
ATC-SVK 508 5R18	130	50	20	9.7	7.7	508	492	98	
ATC-SVK 618 5R18	130	50	20	9.7	7.7	618	602	98	
ATC-SVK 816 3R18	130	50	20	9.7	7.7	816	800	98	
ATC-SVK 978 5R18	130	50	20	9.7	7.7	978	962	98	
ATC-SVK 1212 5R18	130	50	20	9.7	7.7	1212	1196	98	
ATC-SVK 1410 5R18	130	50	20	9.7	7.7	1410	1394	98	
ATC-SW 258 5R18	130	50	20	9.7	7.7	258	242	98	
ATC-SW 278 5R18	130	50	20	9.7	7.7	278	262	98	
ATC-SW 294 5R18	130	50	20	9.7	7.7	294	278	98	
ATC-SW 420 5R18	130	50	20	9.7	7.7	420	404	98	
ATC-SW 508 5R18	130	50	20	9.7	7.7	508	492	98	
ATC-SW 618 5R18	130	50	20	9.7	7.7	618	602	98	
ATC-SW 816 5R18	130	50	20	9.7	7.7	816	800	98	
ATC-SW 978 5R18	130	50	20	9.7	7.7	978	962	98	
ATC-SW 1212 5R18	130	50	20	9.7	7.7	1212	1196	98	
ATC-SW 1410 5R18	130	50	20	9.7	7.7	1410	1394	98	

Large area vacuum gripping system ATC/ATD



Foam Grippers ATD-5R18



Ordering Data Foam Grippers ATD-5R18

Type	Product Code Foam Grippers (thickness 20mm foam)			
	No filter	With filter (F)	No filter without trace (H)	With filter without trace (FH)
ATD-SVK 258 5R18	90.11.01.00241	90.11.01.00261	90.11.01.00281	90.11.01.00301
ATD-SVK 278 5R18	90.11.01.00242	90.11.01.00262	90.11.01.00282	90.11.01.00302
ATD-SVK 294 5R18	90.11.01.00243	90.11.01.00263	90.11.01.00283	90.11.01.00303
ATD-SVK 420 5R18	90.11.01.00244	90.11.01.00264	90.11.01.00284	90.11.01.00304
ATD-SVK 508 5R18	90.11.01.00245	90.11.01.00265	90.11.01.00285	90.11.01.00305
ATD-SVK 618 5R18	90.11.01.00246	90.11.01.00266	90.11.01.00286	90.11.01.00306
ATD-SVK 816 5R18	90.11.01.00247	90.11.01.00267	90.11.01.00287	90.11.01.00307
ATD-SVK 978 5R18	90.11.01.00248	90.11.01.00268	90.11.01.00288	90.11.01.00308
ATD-SVK 1212 5R18	90.11.01.00249	90.11.01.00269	90.11.01.00289	90.11.01.00309
ATD-SVK 1410 5R18	90.11.01.00250	90.11.01.00270	90.11.01.00290	90.11.01.00310
ATD-SW 258 5R18	90.11.01.00251	90.11.01.00271	90.11.01.00291	90.11.01.00311
ATD-SW 278 5R18	90.11.01.00252	90.11.01.00272	90.11.01.00292	90.11.01.00312
ATD-SW 294 5R18	90.11.01.00253	90.11.01.00273	90.11.01.00293	90.11.01.00313
ATD-SW 420 5R18	90.11.01.00254	90.11.01.00274	90.11.01.00294	90.11.01.00314
ATD-SW 508 5R18	90.11.01.00255	90.11.01.00275	90.11.01.00295	90.11.01.00315
ATD-SW 618 5R18	90.11.01.00256	90.11.01.00276	90.11.01.00296	90.11.01.00316
ATD-SW 816 5R18	90.11.01.00257	90.11.01.00277	90.11.01.00297	90.11.01.00317
ATD-SW 978 5R18	90.11.01.00258	90.11.01.00278	90.11.01.00298	90.11.01.00318
ATD-SW 1212 5R18	90.11.01.00259	90.11.01.00279	90.11.01.00299	90.11.01.00319
ATD-SW 1410 5R18	90.11.01.00260	90.11.01.00280	90.11.01.00300	90.11.01.00320

Ordering Data Foam Seal Accessories ATD-5R18

Type	Product Code Foam Grippers (thickness 20mm foam)			
	No filter	With filter (F)	No filter without trace (H)	With filter without trace (FH)
M-PL 258 5R18	90.11.02.00041	90.11.02.00051	90.11.02.00061	90.11.02.00071
M-PL 278 5R18	90.11.02.00042	90.11.02.00052	90.11.02.00062	90.11.02.00072
M-PL 294 5R18	90.11.02.00043	90.11.02.00053	90.11.02.00063	90.11.02.00073
M-PL 420 5R18	90.11.02.00044	90.11.02.00054	90.11.02.00064	90.11.02.00074
M-PL 508 5R18	90.11.02.00045	90.11.02.00055	90.11.02.00065	90.11.02.00075
M-PL 618 5R18	90.11.02.00046	90.11.02.00056	90.11.02.00066	90.11.02.00076
M-PL 816 5R18	90.11.02.00047	90.11.02.00057	90.11.02.00067	90.11.02.00077
M-PL 978 5R18	90.11.02.00048	90.11.02.00058	90.11.02.00068	90.11.02.00078
M-PL 1212 5R18	90.11.02.00049	90.11.02.00059	90.11.02.00069	90.11.02.00079
M-PL 1410 5R18	90.11.02.00050	90.11.02.00060	90.11.02.00070	90.11.02.00080

Combined Suction Cups

Vacuum Suction Cups

Composite Suction Cups

Special Grippers

Vacuum Gripping Systems

Mounting Elements

Vacuum Generators

Valve Technology

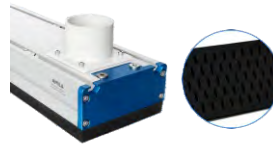
Switch And Monitoring

Vacuum Filters

Large area vacuum gripping system ATC/ATD



Foam Grippers ATD-5R18

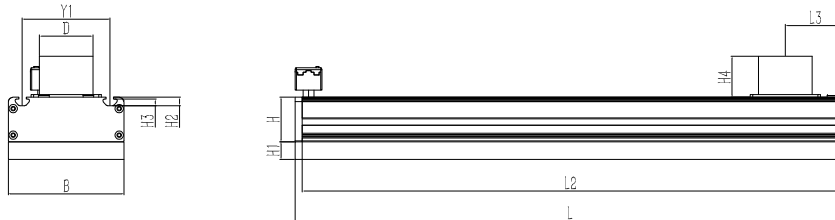


Technical Data ATD-5R18

Type	Number of suction holes	Required suction volume		Suction force		Weight [kg]
			[l/min]	[N]		
ATD-SVK 258 5R18	65	120	325	1.6		
ATD-SVK 278 5R18	70	135	350	1.8		
ATD-SVK 294 5R18	75	150	375	2.0		
ATD-SVK 420 5R18	110	300	550	2.5		
ATD-SVK 508 5R18	135	370	680	3.0		
ATD-SVK 618 5R18	165	450	820	3.4		
ATD-SVK 816 5R18	220	600	1090	4.6		
ATD-SVK 978 5R18	265	750	1350	5.1		
ATD-SVK 1212 5R18	300	900	1650	6.2		
ATD-SVK 1410 5R18	385	1050	1910	7.0		
ATD-SW 258 5R18	65	120	325	1.5		
ATD-SW 278 5R18	70	135	350	1.7		
ATD-SW 294 5R18	75	150	300	1.9		
ATD-SW 420 5R18	110	300	440	2.4		
ATD-SW 508 5R18	135	370	540	2.9		
ATD-SW 618 5R18	165	450	660	3.3		
ATD-SW 816 5R18	220	600	870	4.5		
ATD-SW 978 5R18	265	750	1020	5.0		
ATD-SW 1212 5R18	300	900	1310	6.1		
ATD-SW 1410 5R18	385	1050	1530	6.9		

Design Data ATD-5R18

ATD/5R18



Type	Dimensions[mm]										
	B	D	H	H1	H2	H3	H4	L	L2	L3	Y1
ATD-SVK 258 5R18	130	60	50	20	9.7	7.7	46	258	242	68	98
ATD-SVK 278 5R18	130	60	50	20	9.7	7.7	46	278	262	68	98
ATD-SVK 294 5R18	130	60	50	20	9.7	7.7	46	294	278	68	98
ATD-SVK 420 5R18	130	60	50	20	9.7	7.7	46	420	404	68	98
ATD-SVK 508 5R18	130	60	50	20	9.7	7.7	46	508	492	68	98
ATD-SVK 618 5R18	130	60	50	20	9.7	7.7	46	618	602	68	98
ATD-SVK 816 5R18	130	60	50	20	9.7	7.7	46	816	800	68	98
ATD-SVK 978 5R18	130	60	50	20	9.7	7.7	46	978	962	68	98
ATD-SVK 1212 5R18	130	60	50	20	9.7	7.7	46	1212	1196	68	98
ATD-SVK 1410 5R18	130	60	50	20	9.7	7.7	46	1410	1394	68	98
ATD-SW 258 5R18	130	60	50	20	9.7	7.7	46	258	242	68	98
ATD-SW 278 5R18	130	60	50	20	9.7	7.7	46	278	262	68	98
ATD-SW 294 5R18	130	60	50	20	9.7	7.7	46	294	278	68	98
ATD-SW 420 5R18	130	60	50	20	9.7	7.7	46	420	404	68	98
ATD-SW 508 5R18	130	60	50	20	9.7	7.7	46	508	492	68	98
ATD-SW 618 5R18	130	60	50	20	9.7	7.7	46	618	602	68	98
ATD-SW 816 5R18	130	60	50	20	9.7	7.7	46	816	800	68	98
ATD-SW 978 5R18	130	60	50	20	9.7	7.7	46	978	962	68	98
ATD-SW 1212 5R18	130	60	50	20	9.7	7.7	46	1212	1196	68	98
ATD-SW 1410 5R18	130	60	50	20	9.7	7.7	46	1410	1394	68	98

Large area vacuum gripping system ATC/ATD



Vacuum Suction Cup ATC/B40



Ordering Data And Technical Data Vacuum Suction Cup ATC/B40

Type	Number of suction holes	Air consumption [l/min]	Maximum suction capacity [l/min]	Maximum vacuum [%]	Suction force [N]	Weight [kg]	Ordering Data
ATC-SVK 258 3R54 B40	12	180	1050	60	124	2.8	90.11.01.00321
ATC-SVK 278 3R54 B40	15	180	1050	60	155	3.1	90.11.01.00322
ATC-SVK 294 3R54 B40	15	180	1050	60	155	3.4	90.11.01.00323
ATC-SVK 420 3R54 B40	23	180	1050	60	250	4.2	90.11.01.00324
ATC-SVK 508 3R54 B40	27	270	1190	60	295	4.6	90.11.01.00325
ATC-SVK 618 3R54 B40	33	270	1350	60	360	5.1	90.11.01.00326
ATC-SVK 816 3R54 B40	44	360	1600	60	480	7.7	90.11.01.00327
ATC-SVK 978 3R54 B40	53	450	2700	60	580	8.9	90.11.01.00328
ATC-SVK 1212 3R54 B40	66	540	2940	60	720	10.3	90.11.01.00329
ATC-SVK 1410 3R54 B40	77	630	3180	60	840	11.7	90.11.01.00330
ATC-SW 258 3R54 B40	12	180	820	60	100	2.7	90.11.01.00331
ATC-SW 278 3R54 B40	15	180	860	60	125	3.0	90.11.01.00332
ATC-SW 294 3R54 B40	15	180	900	60	125	3.4	90.11.01.00333
ATC-SW 420 3R54 B40	23	180	1050	60	200	4.1	90.11.01.00334
ATC-SW 508 3R54 B40	27	270	1190	60	225	4.5	90.11.01.00335
ATC-SW 618 3R54 B40	33	270	1350	60	290	5.0	90.11.01.00336
ATC-SW 816 3R54 B40	44	360	1600	60	390	7.6	90.11.01.00337
ATC-SW 978 3R54 B40	53	450	2700	60	480	8.8	90.11.01.00338
ATC-SW 1212 3R54 B40	66	540	2940	60	580	10.2	90.11.01.00339
ATC-SW 1410 3R54 B40	77	630	3180	60	680	11.6	90.11.01.00340

Ordering Data Accessories ATC/B40

Type	Ordering Data
B40	90.01.18.00002

- Combined Suction Cups
- Vacuum Suction Cups
- Composite Suction Cups
- Special Grippers
- Vacuum Gripping Systems
- Mounting Elements
- Vacuum Generators
- Valve Technology
- Switch And Monitoring
- Vacuum Filters

Large area vacuum gripping system ATC/ATD

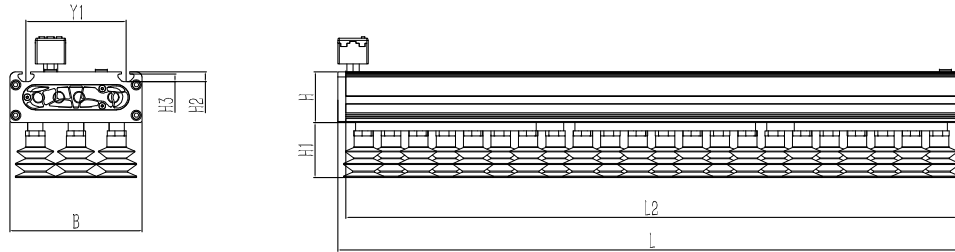


Vacuum Suction Cup ATC/B40



Design Data Vacuum Suction Cup ATC/B40

ATC/B40



Type	Dimensions[mm]								
	B	H	H1	H2	H3	L	L2	Y1	
ATC-SVK 258 3R54 B40	130	50	57	9.7	7.7	258	242	98	
ATC-SVK 278 3R54 B40	130	50	57	9.7	7.7	278	262	98	
ATC-SVK 294 3R54 B40	130	50	57	9.7	7.7	294	278	98	
ATC-SVK 420 3R54 B40	130	50	57	9.7	7.7	420	404	98	
ATC-SVK 508 3R54 B40	130	50	57	9.7	7.7	508	492	98	
ATC-SVK 618 3R54 B40	130	50	57	9.7	7.7	618	602	98	
ATC-SVK 816 3R54 B40	130	50	57	9.7	7.7	816	800	98	
ATC-SVK 978 3R54 B40	130	50	57	9.7	7.7	978	962	98	
ATC-SVK 1212 3R54 B40	130	50	57	9.7	7.7	1212	1196	98	
ATC-SVK 1410 3R54 B40	130	50	57	9.7	7.7	1410	1394	98	
ATC-SW 258 3R54 B40	130	50	57	9.7	7.7	258	242	98	
ATC-SW 278 3R54 B40	130	50	57	9.7	7.7	278	262	98	
ATC-SW 294 3R54 B40	130	50	57	9.7	7.7	294	278	98	
ATC-SW 420 3R54 B40	130	50	57	9.7	7.7	420	404	98	
ATC-SW 508 3R54 B40	130	50	57	9.7	7.7	508	492	98	
ATC-SW 618 3R54 B40	130	50	57	9.7	7.7	618	602	98	
ATC-SW 816 3R54 B40	130	50	57	9.7	7.7	816	800	98	
ATC-SW 978 3R54 B40	130	50	57	9.7	7.7	978	962	98	
ATC-SW 1212 3R54 B40	130	50	57	9.7	7.7	1212	1196	98	
ATC-SW 1410 3R54 B40	130	50	57	9.7	7.7	1410	1394	98	

- Combined Suction Cups
- Vacuum Suction Cups
- Composite Suction Cups
- Special Grippers
- Vacuum Gripping Systems
- Mounting Elements
- Vacuum Generators
- Valve Technology
- Switch And Monitoring
- Vacuum Filters

Large area vacuum gripping system ATC/ATD



Vacuum Suction Cup ATD/B40



Ordering Data And Technical Data Vacuum Suction Cup ATD/B40

Type	Number of suction holes	Required suction volume [l/min]	Suction force [N]	Weight [kg]	Ordering Data
ATD-SVK 258 3R54 B40	12	120	124	2.4	90.11.01.00341
ATD-SVK 278 3R54 B40	15	135	155	2.6	90.11.01.00342
ATD-SVK 294 3R54 B40	15	150	155	2.8	90.11.01.00343
ATD-SVK 420 3R54 B40	23	300	250	3.6	90.11.01.00344
ATD-SVK 508 3R54 B40	27	370	295	4.0	90.11.01.00345
ATD-SVK 618 3R54 B40	33	450	360	4.5	90.11.01.00346
ATD-SVK 816 3R54 B40	44	600	480	6.8	90.11.01.00347
ATD-SVK 978 3R54 B40	53	750	580	8.0	90.11.01.00348
ATD-SVK 1212 3R54 B40	66	900	720	9.4	90.11.01.00349
ATD-SVK 1410 3R54 B40	77	1050	840	10.9	90.11.01.00350
ATD-SW 258 3R54 B40	12	120	100	2.3	90.11.01.00351
ATD-SW 278 3R54 B40	15	135	125	2.5	90.11.01.00352
ATD-SW 294 3R54 B40	15	150	125	2.7	90.11.01.00353
ATD-SW 420 3R54 B40	23	300	200	3.5	90.11.01.00354
ATD-SW 508 3R54 B40	27	370	225	4.0	90.11.01.00355
ATD-SW 618 3R54 B40	33	450	290	4.4	90.11.01.00356
ATD-SW 816 3R54 B40	44	600	390	6.7	90.11.01.00357
ATD-SW 978 3R54 B40	53	750	480	7.9	90.11.01.00358
ATD-SW 1212 3R54 B40	66	900	580	9.3	90.11.01.00359
ATD-SW 1410 3R54 B40	77	1050	680	10.8	90.11.01.00360

Ordering Data Accessories ATD/B40

Type	Ordering Data
B40	90.01.18.00002

- Combined Suction Cups
- Vacuum Suction Cups
- Composite Suction Cups
- Special Grippers
- Vacuum Gripping Systems
- Mounting Elements
- Vacuum Generators
- Valve Technology
- Switch And Monitoring
- Vacuum Filters

Large area vacuum gripping system ATC/ATD

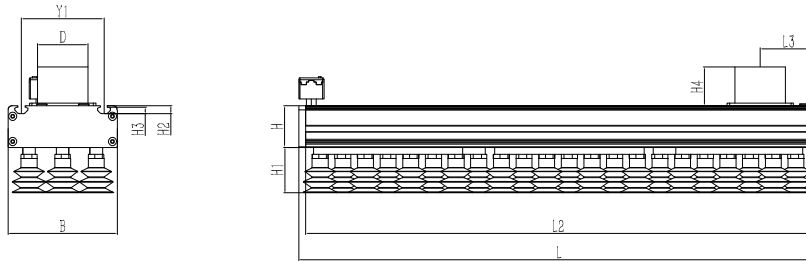


Vacuum Suction Cup ATD/B40



Design Data Vacuum Suction Cup ATD/B40

ATD/B40



Type	Dimensions[mm]										
	B	D	H	H1	H2	H3	H4	L	L2	L3	Y1
ATD-SVK 258 3R54 B40	130	60	50	57	9.7	7.7	46	258	242	68	98
ATD-SVK 278 3R54 B40	130	60	50	57	9.7	7.7	46	278	262	68	98
ATD-SVK 294 3R54 B40	130	60	50	57	9.7	7.7	46	294	278	68	98
ATD-SVK 420 3R54 B40	130	60	50	57	9.7	7.7	46	420	404	68	98
ATD-SVK 508 3R54 B40	130	60	50	57	9.7	7.7	46	508	492	68	98
ATD-SVK 618 3R54 B40	130	60	50	57	9.7	7.7	46	618	602	68	98
ATD-SVK 816 3R54 B40	130	60	50	57	9.7	7.7	46	816	800	68	98
ATD-SVK 978 3R54 B40	130	60	50	57	9.7	7.7	46	978	962	68	98
ATD-SVK 1212 3R54 B40	130	60	50	57	9.7	7.7	46	1212	1196	68	98
ATD-SVK 1410 3R54 B40	130	60	50	57	9.7	7.7	46	1410	1394	68	98
ATD-SW 258 3R54 B40	130	60	50	57	9.7	7.7	46	258	242	68	98
ATD-SW 278 3R54 B40	130	60	50	57	9.7	7.7	46	278	262	68	98
ATD-SW 294 3R54 B40	130	60	50	57	9.7	7.7	46	294	278	68	98
ATD-SW 420 3R54 B40	130	60	50	57	9.7	7.7	46	420	404	68	98
ATD-SW 508 3R54 B40	130	60	50	57	9.7	7.7	46	508	492	68	98
ATD-SW 618 3R54 B40	130	60	50	57	9.7	7.7	46	618	602	68	98
ATD-SW 816 3R54 B40	130	60	50	57	9.7	7.7	46	816	800	68	98
ATD-SW 978 3R54 B40	130	60	50	57	9.7	7.7	46	978	962	68	98
ATD-SW 1212 3R54 B40	130	60	50	57	9.7	7.7	46	1212	1196	68	98
ATD-SW 1410 3R54 B40	130	60	50	57	9.7	7.7	46	1410	1394	68	98

- Combined Suction Cups
- Vacuum Suction Cups
- Composite Suction Cups
- Special Grippers
- Vacuum Gripping Systems
- Mounting Elements
- Vacuum Generators
- Valve Technology
- Switch And Monitoring
- Vacuum Filters

Large area vacuum gripping system ATC/ATD



Vacuum Suction Cup ATC/B20



Ordering Data And Technical Data Vacuum Suction Cup ATC/B20

Type	Number of suction holes	Air consumption [l/min]	Maximum suction capacity [l/min]	Maximum vacuum [%]	Suction force [N]	Weight [kg]	Ordering Data
ATC-SVK 258 5R36 B20	34	180	1050	60	113	3.0	90.11.01.00361
ATC-SVK 278 5R36 B20	35	180	1050	60	116	3.3	90.11.01.00362
ATC-SVK 294 5R36 B20	39	180	1050	60	130	3.6	90.11.01.00363
ATC-SVK 420 5R36 B20	55	180	1050	60	180	4.5	90.11.01.00364
ATC-SVK 508 5R36 B20	69	270	1190	60	230	4.9	90.11.01.00365
ATC-SVK 618 5R36 B20	84	270	1350	60	270	5.4	90.11.01.00366
ATC-SVK 816 5R36 B20	110	360	1600	60	360	8.0	90.11.01.00367
ATC-SVK 978 5R36 B20	130	450	2700	60	430	9.1	90.11.01.00368
ATC-SVK 1212 5R36 B20	165	540	2940	60	540	10.6	90.11.01.00369
ATC-SVK 1410 5R36 B20	194	630	3180	60	630	12.0	90.11.01.00370
ATC-SW 258 5R36 B20	34	180	820	60	87	2.9	90.11.01.00371
ATC-SW 278 5R36 B20	35	180	860	60	89	3.2	90.11.01.00372
ATC-SW 294 5R36 B20	39	180	900	60	100	3.5	90.11.01.00373
ATC-SW 420 5R36 B20	55	180	1050	60	140	4.4	90.11.01.00374
ATC-SW 508 5R36 B20	69	270	1190	60	175	4.8	90.11.01.00375
ATC-SW 618 5R36 B20	84	270	1350	60	210	5.3	90.11.01.00376
ATC-SW 816 5R36 B20	110	360	1600	60	280	7.9	90.11.01.00377
ATC-SW 978 5R36 B20	130	450	2700	60	330	9.0	90.11.01.00378
ATC-SW 1212 5R36 B20	165	540	2940	60	420	10.5	90.11.01.00379
ATC-SW 1410 5R36 B20	193	630	3180	60	490	11.9	90.11.01.00380

Ordering Data Accessories ATC/B20

Type	Ordering Data
B20	90.01.18.00001

- Combined Suction Cups
- Vacuum Suction Cups
- Composite Suction Cups
- Special Grippers
- Vacuum Gripping Systems
- Mounting Elements
- Vacuum Generators
- Valve Technology
- Switch And Monitoring
- Vacuum Filters

Large area vacuum gripping system ATC/ATD

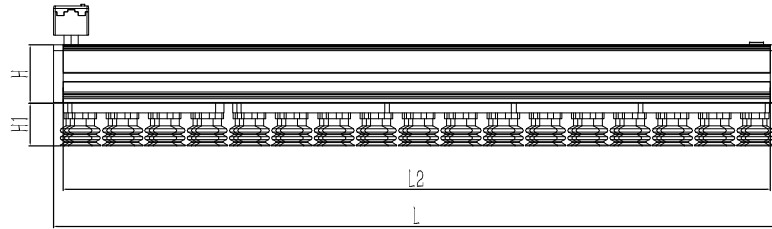
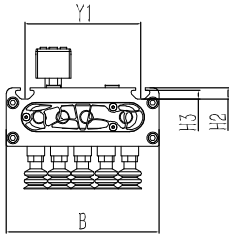


Vacuum Suction Cup ATC/B20



Design Data Vacuum Suction Cup ATC/B20

ATC/B20



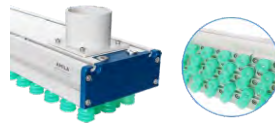
Type	Dimensions[mm]							
	B	H	H1	H2	H3	L	L2	Y1
ATC-SVK 258 5R36 B20	130	50	39	9.7	7.7	258	242	98
ATC-SVK 278 5R36 B20	130	50	39	9.7	7.7	278	262	98
ATC-SVK 294 5R36 B20	130	50	39	9.7	7.7	294	278	98
ATC-SVK 420 5R36 B20	130	50	39	9.7	7.7	420	404	98
ATC-SVK 508 5R36 B20	130	50	39	9.7	7.7	508	492	98
ATC-SVK 618 5R36 B20	130	50	39	9.7	7.7	618	602	98
ATC-SVK 816 5R36 B20	130	50	39	9.7	7.7	816	800	98
ATC-SVK 978 5R36 B20	130	50	39	9.7	7.7	978	962	98
ATC-SVK 1212 5R36 B20	130	50	39	9.7	7.7	1212	1196	98
ATC-SVK 1410 5R36 B20	130	50	39	9.7	7.7	1410	1394	98
ATC-SW 258 5R36 B20	130	50	39	9.7	7.7	258	242	98
ATC-SW 278 5R36 B20	130	50	39	9.7	7.7	278	262	98
ATC-SW 294 5R36 B20	130	50	39	9.7	7.7	294	278	98
ATC-SW 420 5R36 B20	130	50	39	9.7	7.7	420	404	98
ATC-SW 508 5R36 B20	130	50	39	9.7	7.7	508	492	98
ATC-SW 618 5R36 B20	130	50	39	9.7	7.7	618	602	98
ATC-SW 816 5R36 B20	130	50	39	9.7	7.7	816	800	98
ATC-SW 978 5R36 B20	130	50	39	9.7	7.7	978	962	98
ATC-SW 1212 5R36 B20	130	50	39	9.7	7.7	1212	1196	98
ATC-SW 1410 5R36 B20	130	50	39	9.7	7.7	1410	1394	98

- Combined Suction Cups
- Vacuum Suction Cups
- Composite Suction Cups
- Special Grippers
- Vacuum Gripping Systems
- Mounting Elements
- Vacuum Generators
- Valve Technology
- Switch And Monitoring
- Vacuum Filters

Large area vacuum gripping system ATC/ATD



Vacuum Suction Cup ATD/B20



Ordering Data And Technical Data Vacuum Suction Cup ATD/B20

Type	Number of suction holes	Required suction volume [l/min]	Suction force [N]	Weight [kg]	Ordering Data
ATD-SVK 258 5R36 B20	34	120	113	2.4	90.11.01.00381
ATD-SVK 278 5R36 B20	35	135	116	2.7	90.11.01.00382
ATD-SVK 294 5R36 B20	39	150	130	3.0	90.11.01.00383
ATD-SVK 420 5R36 B20	55	300	180	3.9	90.11.01.00384
ATD-SVK 508 5R36 B20	69	370	230	4.3	90.11.01.00385
ATD-SVK 618 5R36 B20	82	450	270	4.8	90.11.01.00386
ATD-SVK 816 5R36 B20	110	600	360	7.1	90.11.01.00387
ATD-SVK 978 5R36 B20	130	750	430	8.2	90.11.01.00388
ATD-SVK 1212 5R36 B20	165	900	540	9.7	90.11.01.00389
ATD-SVK 1410 5R36 B20	193	1050	630	11.1	90.11.01.00390
ATD-SW 258 5R36 B20	34	120	87	2.3	90.11.01.00391
ATD-SW 278 5R36 B20	35	135	89	2.6	90.11.01.00392
ATD-SW 294 5R36 B20	39	150	100	2.9	90.11.01.00393
ATD-SW 420 5R36 B20	55	300	140	3.8	90.11.01.00394
ATD-SW 508 5R36 B20	69	370	175	4.2	90.11.01.00395
ATD-SW 618 5R36 B20	82	450	210	4.7	90.11.01.00396
ATD-SW 816 5R36 B20	110	600	280	7.0	90.11.01.00397
ATD-SW 978 5R36 B20	130	750	330	8.1	90.11.01.00398
ATD-SW 1212 5R36 B20	165	900	420	9.6	90.11.01.00399
ATD-SW 1410 5R36 B20	193	1050	490	11	90.11.01.00400

Ordering Data Accessories ATD/B20

Type	Ordering Data
B20	90.01.18.00001

- Combined Suction Cups
- Vacuum Suction Cups
- Composite Suction Cups
- Special Grippers
- Vacuum Gripping Systems
- Mounting Elements
- Vacuum Generators
- Valve Technology
- Switch And Monitoring
- Vacuum Filters

Large area vacuum gripping system ATC/ATD

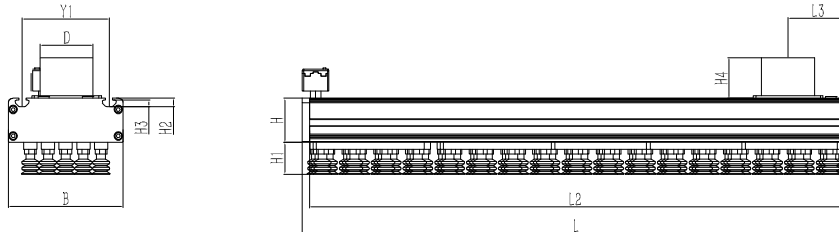


Vacuum Suction Cup ATD/B20



Design Data Vacuum Suction Cup ATD/B20

ATD/B20



Type	Dimensions[mm]										
	B	D	H	H1	H2	H3	H4	L	L2	L3	Y1
ATD-SVK 258 5R36 B20	130	60	50	39	9.7	7.7	46	258	242	68	98
ATD-SVK 278 5R36 B20	130	60	50	39	9.7	7.7	46	278	262	68	98
ATD-SVK 294 5R36 B20	130	60	50	39	9.7	7.7	46	294	278	68	98
ATD-SVK 420 5R36 B20	130	60	50	39	9.7	7.7	46	420	404	68	98
ATD-SVK 508 5R36 B20	130	60	50	39	9.7	7.7	46	508	492	68	98
ATD-SVK 618 5R36 B20	130	60	50	39	9.7	7.7	46	618	602	68	98
ATD-SVK 816 5R36 B20	130	60	50	39	9.7	7.7	46	816	800	68	98
ATD-SVK 978 5R36 B20	130	60	50	39	9.7	7.7	46	978	962	68	98
ATD-SVK 1212 5R36 B20	130	60	50	39	9.7	7.7	46	1212	1196	68	98
ATD-SVK 1410 5R36 B20	130	60	50	39	9.7	7.7	46	1410	1394	68	98
ATD-SW 258 5R36 B20	130	60	50	39	9.7	7.7	46	258	242	68	98
ATD-SW 278 5R36 B20	130	60	50	39	9.7	7.7	46	278	262	68	98
ATD-SW 294 5R36 B20	130	60	50	39	9.7	7.7	46	294	278	68	98
ATD-SW 420 5R36 B20	130	60	50	39	9.7	7.7	46	420	404	68	98
ATD-SW 508 5R36 B20	130	60	50	39	9.7	7.7	46	508	492	68	98
ATD-SW 618 5R36 B20	130	60	50	39	9.7	7.7	46	618	602	68	98
ATD-SW 816 5R36 B20	130	60	50	39	9.7	7.7	46	816	800	68	98
ATD-SW 978 5R36 B20	130	60	50	39	9.7	7.7	46	978	962	68	98
ATD-SW 1212 5R36 B20	130	60	50	39	9.7	7.7	46	1212	1196	68	98
ATD-SW 1410 5R36 B20	130	60	50	39	9.7	7.7	46	1410	1394	68	98

- Combined Suction Cups
- Vacuum Suction Cups
- Composite Suction Cups
- Special Grippers
- Vacuum Gripping Systems
- Mounting Elements
- Vacuum Generators
- Valve Technology
- Switch And Monitoring
- Vacuum Filters

Large area vacuum gripping system ATC/ATD



Combined Grippers ATC/MX39



Technical Data Combined Grippers ATC/MX39

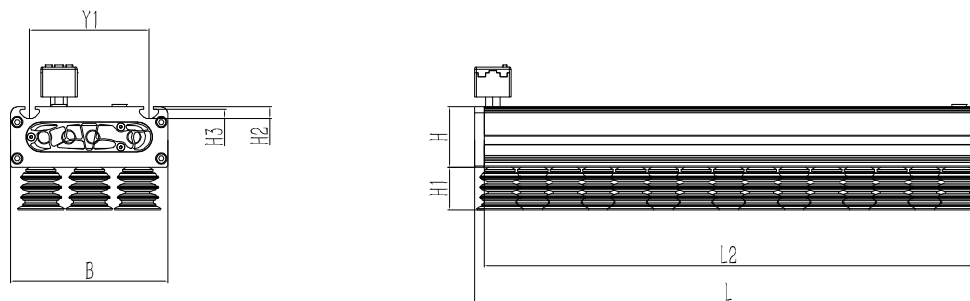
Type	Number of suction holes	Air consumption [l/min]	Maximum suction capacity [l/min]	Maximum vacuum [%]	Suction force [N]	Weight [kg]
ATC-SVK 294 MX39	15	180	1050	60	155	3.4
ATC-SVK 420 MX39	23	180	1050	60	250	4.2
ATC-SVK 508 MX39	27	270	1190	60	295	4.6
ATC-SVK 618 MX39	33	270	1350	60	360	5.1
ATC-SVK 816 MX39	44	360	1600	60	480	7.7
ATC-SVK 978 MX39	53	450	2200	60	580	8.9
ATC-SVK 1212 MX39	66	540	2940	60	720	10.3
ATC-SVK 1410 MX39	77	630	3180	60	840	11.7

Ordering Data Combined Grippers ATC/MX39

Type	Ordering Data	Type	Ordering Data
ATC-SVK 294 MX39	90.11.01.00401	ATC-SVK 816 MX39	90.11.01.00405
ATC-SVK 420 MX39	90.11.01.00402	ATC-SVK 978 MX39	90.11.01.00406
ATC-SVK 508 MX39	90.11.01.00403	ATC-SVK 1212 MX39	90.11.01.00407
ATC-SVK 618 MX39	90.11.01.00404	ATC-SVK 1410 MX39	90.11.01.00408

Design Data Combined Grippers ATC/MX39

ATC/MX39



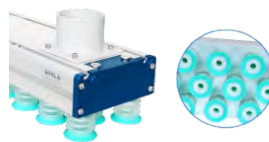
Type	Dimensions[mm]								Y1
	B	H	H1	H2	H3	L	L2		
ATC-SVK 294 MX39	130	50	38	9.7	7.7	294	278	98	
ATC-SVK 420 MX39	130	50	38	9.7	7.7	420	404	98	
ATC-SVK 508 MX39	130	50	38	9.7	7.7	508	492	98	
ATC-SVK 618 MX39	130	50	38	9.7	7.7	618	602	98	
ATC-SVK 816 MX39	130	50	38	9.7	7.7	816	800	98	
ATC-SVK 978 MX39	130	50	38	9.7	7.7	978	962	98	
ATC-SVK 1212 MX39	130	50	38	9.7	7.7	1212	1196	98	
ATC-SVK 1410 MX39	130	50	38	9.7	7.7	1410	1394	98	

- Combined Suction Cups
- Vacuum Suction Cups
- Composite Suction Cups
- Special Grippers
- Vacuum Gripping Systems
- Mounting Elements
- Vacuum Generators
- Valve Technology
- Switch And Monitoring
- Vacuum Filters

Large area vacuum gripping system ATC/ATD



Combined Grippers ATD/MX39



Technical Data Combined Grippers ATD/MX39

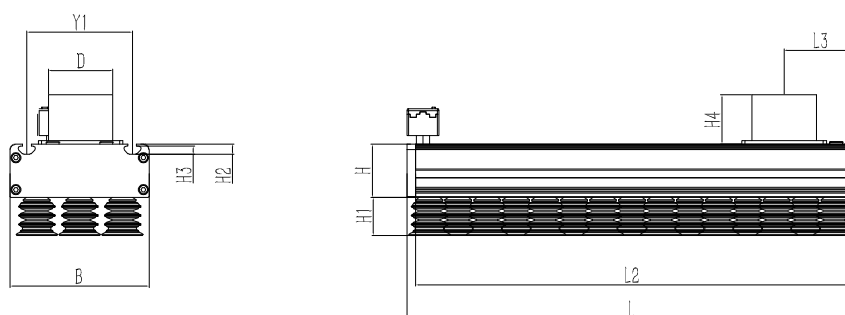
Type	Number of suction holes	Required suction volume	Suction force	Weight
		[l/min]	[N]	[kg]
ATD-SVK 294 MX39	15	150	155	2.8
ATD-SVK 420 MX39	23	300	250	3.6
ATD-SVK 508 MX39	27	370	295	4.0
ATD-SVK 618 MX39	33	450	360	4.5
ATD-SVK 816 MX39	44	600	480	6.8
ATD-SVK 978 MX39	53	750	580	8.0
ATD-SVK 1212 MX39	66	900	720	9.4
ATD-SVK 1410 MX39	77	1050	840	10.9

Ordering Data Combined Grippers ATD/MX39

Type	Ordering Data	Type	Ordering Data
ATD-SVK 294 MX39	90.11.01.00409	ATD-SVK 816 MX39	90.11.01.00413
ATD-SVK 420 MX39	90.11.01.00410	ATD-SVK 978 MX39	90.11.01.00414
ATD-SVK 508 MX39	90.11.01.00411	ATD-SVK 1212 MX39	90.11.01.00415
ATD-SVK 618 MX39	90.11.01.00412	ATD-SVK 1410 MX39	90.11.01.00416

Design Data Combined Grippers ATD/MX39

ATD/MX39

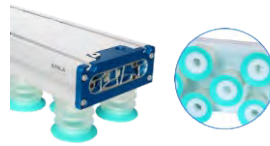


Type	Dimensions[mm]										
	B	D	H	H1	H2	H3	H4	L	L2	L3	Y1
ATD-SVK 294 MX39	130	60	50	38	9.7	7.7	46	294	278	68	98
ATD-SVK 420 MX39	130	60	50	38	9.7	7.7	46	420	404	68	98
ATD-SVK 508 MX39	130	60	50	38	9.7	7.7	46	508	492	68	98
ATD-SVK 618 MX39	130	60	50	38	9.7	7.7	46	618	602	68	98
ATD-SVK 816 MX39	130	60	50	38	9.7	7.7	46	816	800	68	98
ATD-SVK 978 MX39	130	60	50	38	9.7	7.7	46	978	962	68	98
ATD-SVK 1212 MX39	130	60	50	38	9.7	7.7	46	1212	1196	68	98
ATD-SVK 1410 MX39	130	60	50	38	9.7	7.7	46	1410	1394	68	98

Large area vacuum gripping system ATC/ATD



Combined Grippers ATC/MX55



Technical Data Combined Grippers ATC/MX55

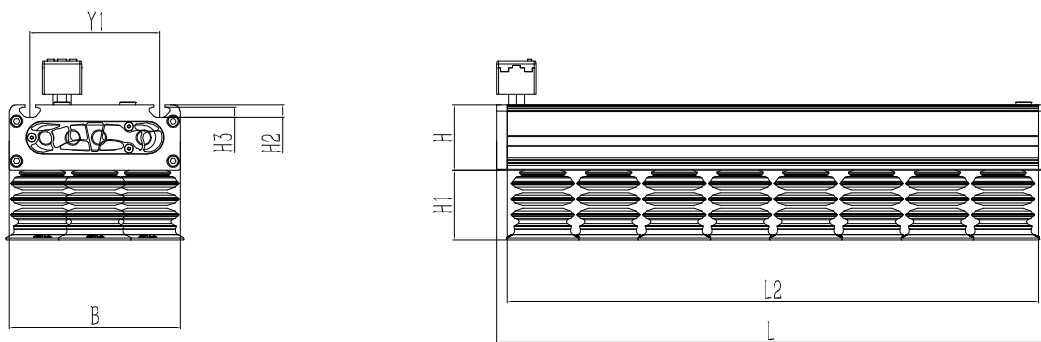
Type	Number of suction holes	Air consumption [l/min]	Maximum suction capacity [l/min]	Maximum vacuum [%]	Suction force [N]	Weight [kg]
ATC-SVK 294 MX55	8	180	1050	60	210	2.5
ATC-SVK 420 MX55	12	180	1050	60	320	3.3
ATC-SVK 508 MX55	15	270	1050	60	440	3.8
ATC-SVK 618 MX55	18	270	1050	60	520	4.3
ATC-SVK 816 MX55	24	360	1050	60	610	6.6
ATC-SVK 978 MX55	29	450	1190	60	720	7.8
ATC-SVK 1212 MX55	36	540	1190	60	800	9.1
ATC-SVK 1410 MX55	42	630	1350	60	900	10.6

Ordering Data Combined Grippers ATC/MX55

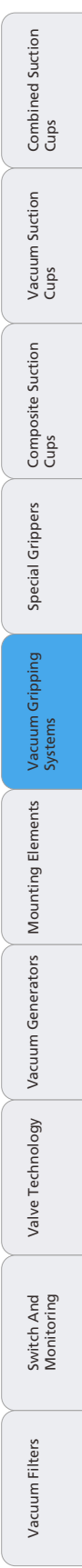
Type	Ordering Data	Type	Ordering Data
ATC-SVK 294 MX55	90.11.01.00417	ATC-SVK 816 MX55	90.11.01.00421
ATC-SVK 420 MX55	90.11.01.00418	ATC-SVK 978 MX55	90.11.01.00422
ATC-SVK 508 MX55	90.11.01.00419	ATC-SVK 1212 MX55	90.11.01.00423
ATC-SVK 618 MX55	90.11.01.00420	ATC-SVK 1410 MX55	90.11.01.00424

Design Data Combined Grippers ATC/MX55

ATC/MX55



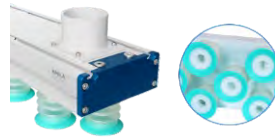
Type	Dimensions[mm]							
	B	H	H1	H2	H3	L	L2	Y1
ATC-SVK 294 MX55	130	50	53	9.7	7.7	294	278	98
ATC-SVK 420 MX55	130	50	53	9.7	7.7	420	404	98
ATC-SVK 508 MX55	130	50	53	9.7	7.7	508	492	98
ATC-SVK 618 MX55	130	50	53	9.7	7.7	618	602	98
ATC-SVK 816 MX55	130	50	53	9.7	7.7	816	800	98
ATC-SVK 978 MX55	130	50	53	9.7	7.7	978	962	98
ATC-SVK 1212 MX55	130	50	53	9.7	7.7	1212	1196	98
ATC-SVK 1410 MX55	130	50	53	9.7	7.7	1410	1394	98



Large area vacuum gripping system ATC/ATD



Combined Grippers ATD/MX55



Technical Data Combined Grippers ATCD/MX55

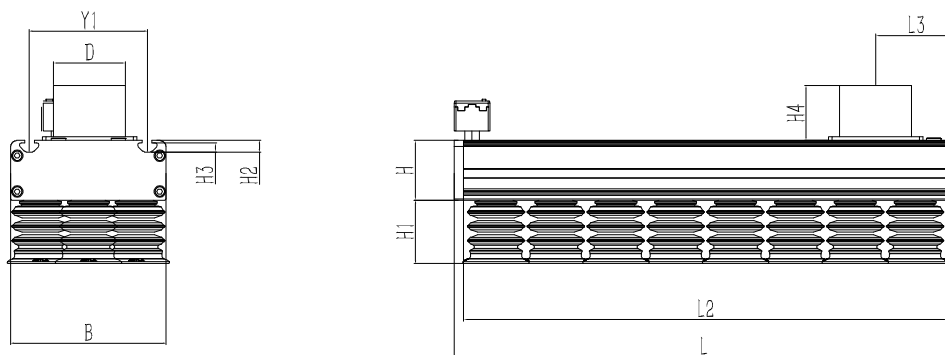
Type	Number of suction holes	Required suction volume	Suction force	Weight
		[l/min]	[N]	[kg]
ATD-SVK 294 MX55	8	150	210	2.4
ATD-SVK 420 MX55	12	300	320	3.2
ATD-SVK 508 MX55	15	370	440	3.7
ATD-SVK 618 MX55	18	450	520	4.2
ATD-SVK 816 MX55	24	600	610	6.5
ATD-SVK 978 MX55	29	750	720	7.7
ATD-SVK 1212 MX55	36	900	800	9.0
ATD-SVK 1410 MX55	42	1050	900	10.5

Ordering Data Combined Grippers ATCD/MX55

Type	Ordering Data	Type	Ordering Data
ATD-SVK 294 MX55	90.11.01.00425	ATD-SVK 816 MX55	90.11.01.00429
ATD-SVK 420 MX55	90.11.01.00426	ATD-SVK 978 MX55	90.11.01.00430
ATD-SVK 508 MX55	90.11.01.00427	ATD-SVK 1212 MX55	90.11.01.00431
ATD-SVK 618 MX55	90.11.01.00428	ATD-SVK 1410 MX55	90.11.01.00432

Design Data Combined Grippers ATCD/MX55

ATD/MX55



Type	Dimensions[mm]										
	B	D	H	H1	H2	H3	H4	L	L2	L3	Y1
ATD-SVK 294 MX55	130	60	50	53	9.7	7.7	46	294	278	68	98
ATD-SVK 420 MX55	130	60	50	53	9.7	7.7	46	420	404	68	98
ATD-SVK 508 MX55	130	60	50	53	9.7	7.7	46	508	492	68	98
ATD-SVK 618 MX55	130	60	50	53	9.7	7.7	46	618	602	68	98
ATD-SVK 816 MX55	130	60	50	53	9.7	7.7	46	816	800	68	98
ATD-SVK 978 MX55	130	60	50	53	9.7	7.7	46	978	962	68	98
ATD-SVK 1212 MX55	130	60	50	53	9.7	7.7	46	1212	1196	68	98
ATD-SVK 1410 MX55	130	60	50	53	9.7	7.7	46	1410	1394	68	98